

APEC ME Report and Information Sharing - **MALAYSIA**

PROJECTS:

1. REINFORCING CAPACITIES TO IMPROVE THE MEASUREMENT OF FOOD LOSSES
(JULY-DEC 2021)
2. PILOT DATA COLLECTION AND MEASURE FRUIT AND VEGETABLE LOSSES UNDER SDG
12.3.1.A IN SELECT REGIONS OF MALAYSIA
(JAN-DEC 2023)

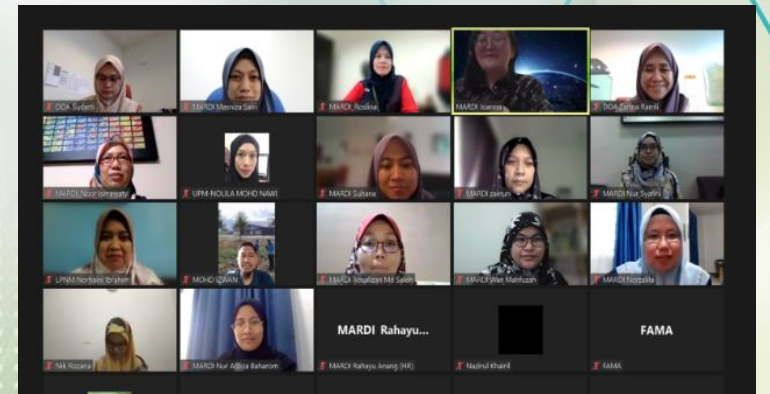
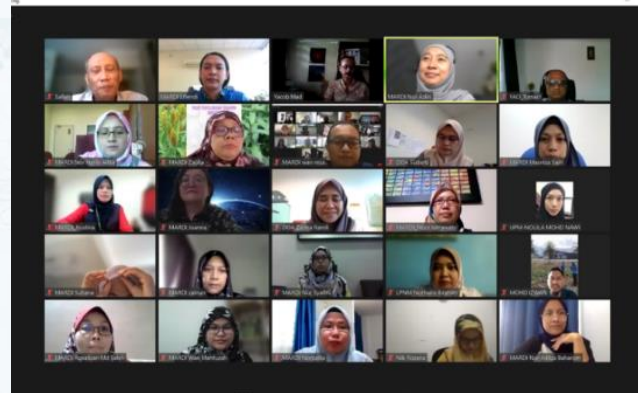


Previous Project

Reinforcing Capacities to
Improve the Measurement of
Food Losses
(July-Dec 2021)

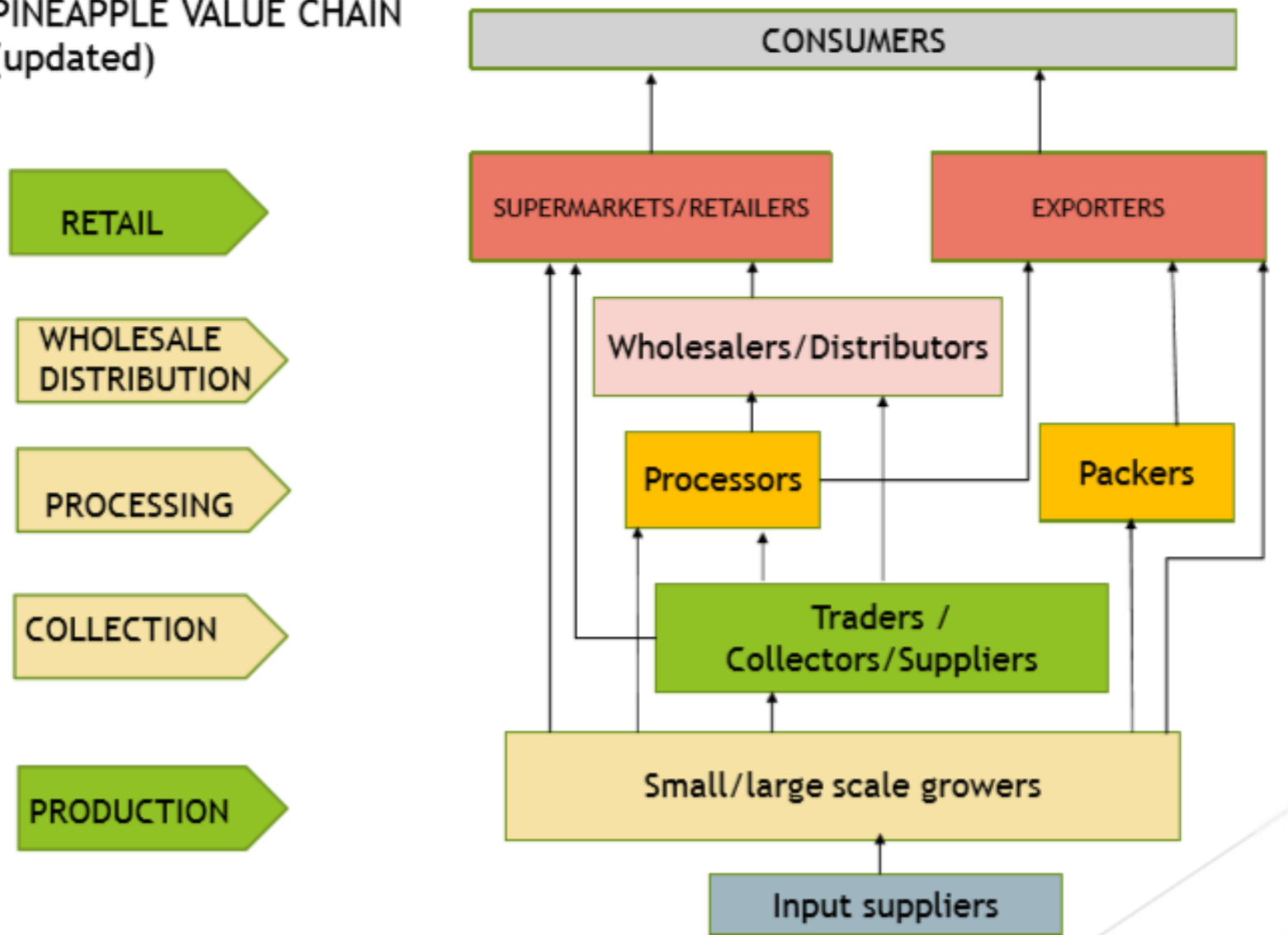


1. Training on Food Loss Measurement, Sustainable Development Goal (SDG) indicator 12.3.1.a and Identification of Critical Loss Points (21-22 July 2021)
2. Workshop on value chain analysis and Identification of postharvest loss points (26 August 2021)
3. Focus group discussion on Development of data collection instruments and procedures, and identification of critical loss points (22 Sept 2021)
4. Workshop on Confirmation of data collection instruments and procedures, and identification of critical loss points (25 October 2021)
5. Stakeholder Workshop to Present Food loss measurement data collection tool: field experience of value chain analysis & questionnaire pre-test; loss mitigation measures and way forward (21 Dec 2021)



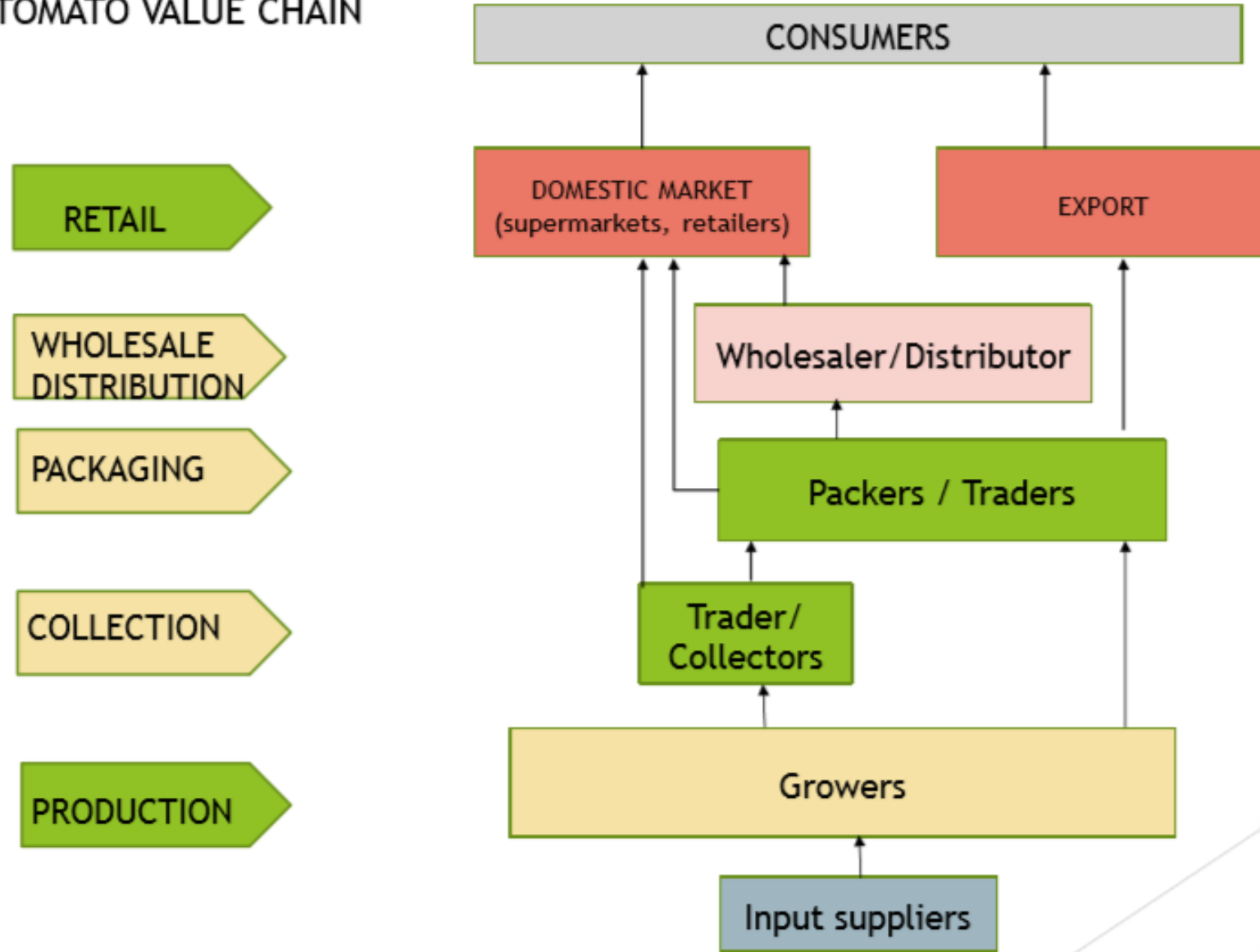


PINEAPPLE VALUE CHAIN (updated)





TOMATO VALUE CHAIN





Grower/packer/exporter



***FOCUS GROUP DISCUSSION WITH STAKEHOLDERS
(State Agencies)***

**Project: PILOT DATA COLLECTION AND
MEASURE FRUIT AND VEGETABLE LOSSES
UNDER SDG 12.3.1.A IN SELECT REGIONS
OF MALAYSIA**

STATE OF PAHANG
MARDI Cameron Highlands 17 Mac 2023

OBJECTIVE

- **To further strengthen Malaysian official's capacities to measure fruit and vegetable losses – part of SDG indicator 12.3.1a - through pilot surveys and loss percentage estimations in select regions of Malaysia, and contribute to government priority Area C: Inclusive food system and value chain development; specifically Output C4: Enhanced capacity and awareness to reduce food waste and post-harvest losses.**

OUTPUTS

- **The Malaysian officials' capacities** to measure harvest and post-harvest food losses for selected fruit and vegetables through training workshops, expert consultations, field tests & evaluation enhanced.
- **Data collection instruments and procedures** to measure food losses for selected fruits and vegetables proposed, developed, field-tested and established.
- **Critical loss points, causes of postharvest losses and viable as well as sustainable solutions** including investment needed to mitigate losses for selected fruits and vegetables value-chains in selected areas of Malaysia identified, recommended



COUNTRY FOOD LOSS INDEX

The Country Food Loss Index (FLI) is a fixed-base weighted index (Laspeyres-type) widely used in official statistics:

$$FLI_{it} = \frac{FLP_{it}}{FLP_{it_0}} * 100$$

j = commodity

i = country

t = year

$$FLP_{it} = \frac{\sum_j l_{ijt} * (q_0 * p_0)}{\sum_j (q_0 * p_0)}$$

- The FLI measures trends in percentage losses over time, comparing a national average Food Loss Percentage (FLP) in the current year to the same percentage in the base year.
- A FLI < 100 means that a country has met the SDG target 12.3.1.a

Final workshop to present result to stakeholders for review and finalization (Nov 2023)

Data instruments development and pre-test (Feb-Apr 2023)

-Supply chain mapping
-critical loss points identification (Mac 2023)

Design samples size and sampling strategy for each value chain actors (Apr-Jun 2023)

Data collection (Jul-Sep 2023)

1

2

3

4

5

6

7

8

9

Identify and confirm
- Prioritised Fruits and vegetables
- Prioritised States (Mac 2023)

-Identify/ compile sampling frames in critical loss points (Apr 2023)

Hire enumerators & training for enumerators (Jun-Aug 2023)

Data analysis and documentation (Sept-Nov 2023)

Work Plan



Stakeholder workshop in Johor State



NEW PROPOSAL (APEC SUPPORT FUNDING)

- **Project Title:** Workshop on the efficient farming system through the implementation of technology adoption
- **Project Summary:** One of the APEC's priorities includes balancing all aspects by integrating inclusivity and sustainability goals with economic objectives. The APEC region is densely populated and has a high demand for food, but sustainable resource use, high input costs, and ineffective farm management are prevalent. Driven by the bio-circular-green economy concept, Malaysia plans to host a farming strategy workshop that incorporates modern technology. The workshop will discuss how to maximise income with limited input due to unstable geopolitics, how to integrate modern technology into farming, and how an efficient farming system can improve food security. Through a demonstration of on-site farming technology and a visit to a successful farm, the participants will be exposed to the practical application of the technology. This workshop will benefit at least 15 APEC countries, with developed-country speakers and developing-country participants.



THANK YOU TERIMA KASIH



Malaysian Agricultural Research and Development Institute (MARDI)

Nur Azlin Razali

(MSc. Horticulture, University of Florida, USA)
Senior Research Officer

Postharvest Handling Programme
Horticulture Research Centre
Malaysian Agricultural Research and Development Institute (MARDI)
Serdang, Selangor, MALAYSIA

+603-8953 6243 +618-7747211
nurazlin@mardi.gov.my